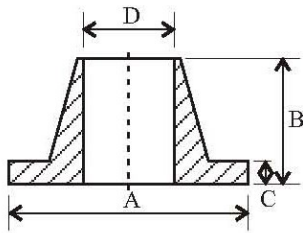
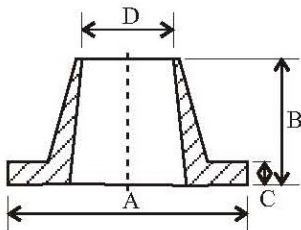


## CONE AND RUBBER DIMENSIONS



**ALL SIZES ARE APPROXIMATE**

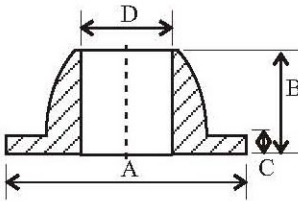
PART NO	DIA OF GLASS	DIA OF 'A'	OVERALL 'B'	THICKNESS 'C'	BIA OF BORE
12	½" (13mm)	15/16" (23mm)	11/16" (18mm)	3/16" (5mm)	½" (13mm)
44	½" (13mm)	1.3/16" (30mm)	¾" (19mm)	3/16" (5mm)	½" (13mm)
50	⅝" (16mm)	1.5/16" (33mm)	11/16" (18mm)	3/16" (5mm)	⅝" (16mm)
58	¾" (19mm)	1.5/16" (33mm)	¾" (19mm)	¼" (6mm)	¾" (19mm)
62	¾" (19mm)	1½" (38mm)	¾" (19mm)	¼" (6mm)	¾" (19mm)
75	¾" (19mm)	1⅝" (29mm)	⅞" (22mm)	9/32" (7mm)	¾" (19mm)



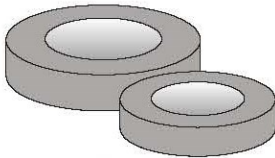
PART NO	DIA OF GLASS	DIA OF 'A'	OVERALL 'B'	THICKNESS 'C'	BIA OF BORE
3	½" (13mm)	1" (25mm)	⅝" (16mm)	3/16" (5mm)	9/16" - 7/16" (14-12mm)
5	⅝" (16mm)	1.5/16" (33mm)	⅝" (16mm)	3/16" (5mm)	⅝" - ½" (16-13mm)
6	11/16" (18mm)	1.5/16" (33mm)	⅝" (16mm)	3/16" (5mm)	¾" - 9/16" (19-14mm)
7	¾" (19mm)	1.5/16" (33mm)	¾" (19mm)	5/16" (8mm)	¾" - ⅝" (16-16mm)
77	¾" (19mm)	1.3/16" (30mm)	⅝" (16mm)	3/16" (5mm)	¾" - 9/16" (19-14mm)

**ALL PRESSURES AND TEMPERATURES ARE SUBJECT TO INDIVIDUAL APPLICATION**

## CONE AND RUBBER DIMENSIONS



PART NO	DIA OF GLASS	DIA OF 'A'	OVERALL 'B'	THICKNESS 'C'	BIA OF BORE
90	½" (13mm)	1⅛" (29mm)	⅝" (16mm)	3/16" (5mm)	½" (13mm)
92	¾" (19mm)	1¼" (31mm)	⅝" (16mm)	3/16" (5mm)	¾" (19mm)



OD	ID	THICKNESS
⅝"	⅜"	¼"
9/16"	½"	⅝"
¾"	½"	¼"
¾"	½"	⅜"
⅞"	½"	¼"
⅞"	½"	⅜"
13/16"	½"	7/16"
¾"	½"	½"
⅞"	½"	½"

OD	ID	THICKNESS
⅞"	⅝"	¼"
⅞"	⅝"	½"
1"	⅝"	½"
13/16"	⅝"	¼"
1"	¾"	5/16"
1"	¾"	½"
1.3/64"	¾"	⅜"
1⅛"	¾"	½"
1⅛"	¾"	⅝"

**ALL PRESSURES AND TEMPERATURES ARE SUBJECT TO INDIVIDUAL APPLICATION**